


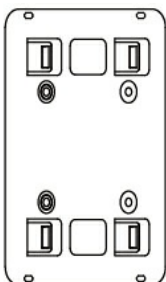
# MCore Pro Installation

## Package Contents

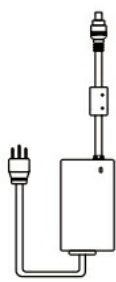
 **TIP**  
We recommend using the accessories provided or approved by Yealink. The use of unapproved third-party accessories may result in poor performance.



MCore Pro



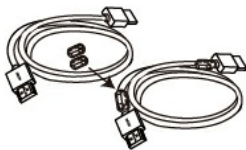
(150\*117\*15mm)  
Bracket



(2.1m, 6.89ft)  
Power Adapter  
(19V/4.74A)



Quick Start Guide



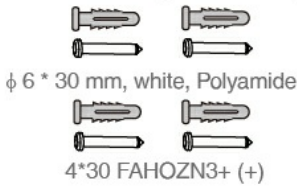
(1.8 m, 5.91 ft)

HDMI Cable(x3)



(W25.4\*L50mm,3M)

Velcro(x2)



Expansion Screw (x4)  
Self-tapping Screw(x4)



3\*6PMOZN3+

Machine  
Screw(x2)



(WH-85\*3.0mm)

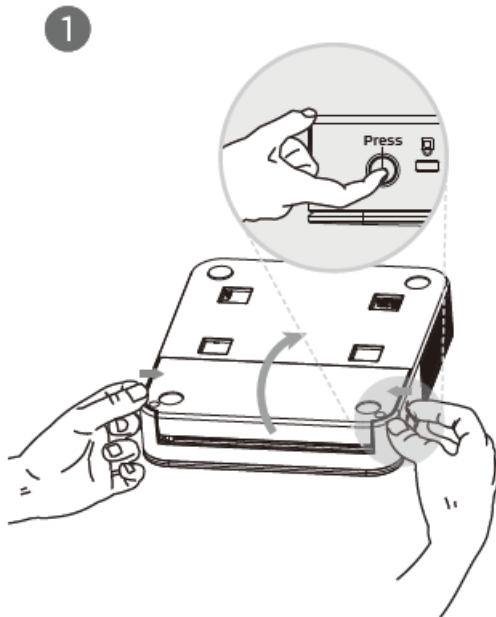
Screwdriver

## Hardware Interface

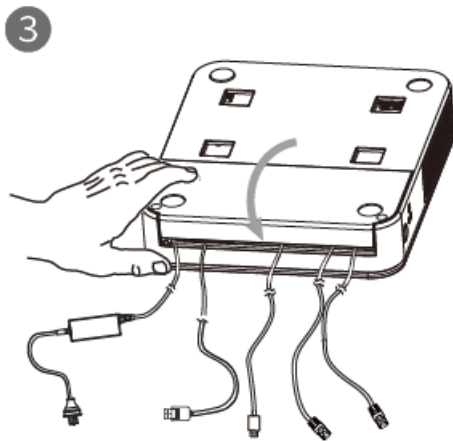
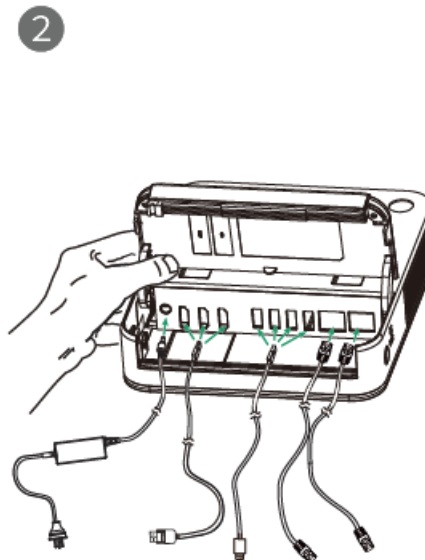
For detailed information, please refer to the [MVC Hardware Overview - MCore Pro](#) .

## MCore Pro Connection

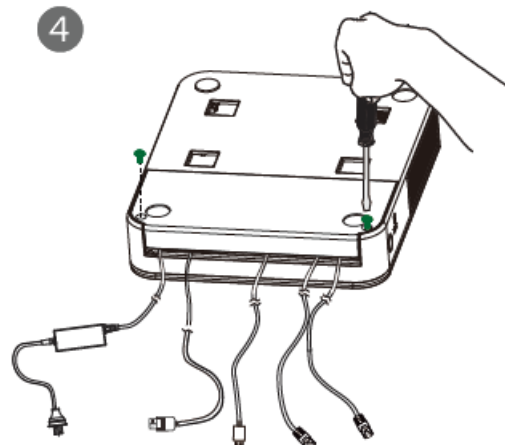




- Press the buttons on both sides to open



- Fasten the MCore Pro with machine screws



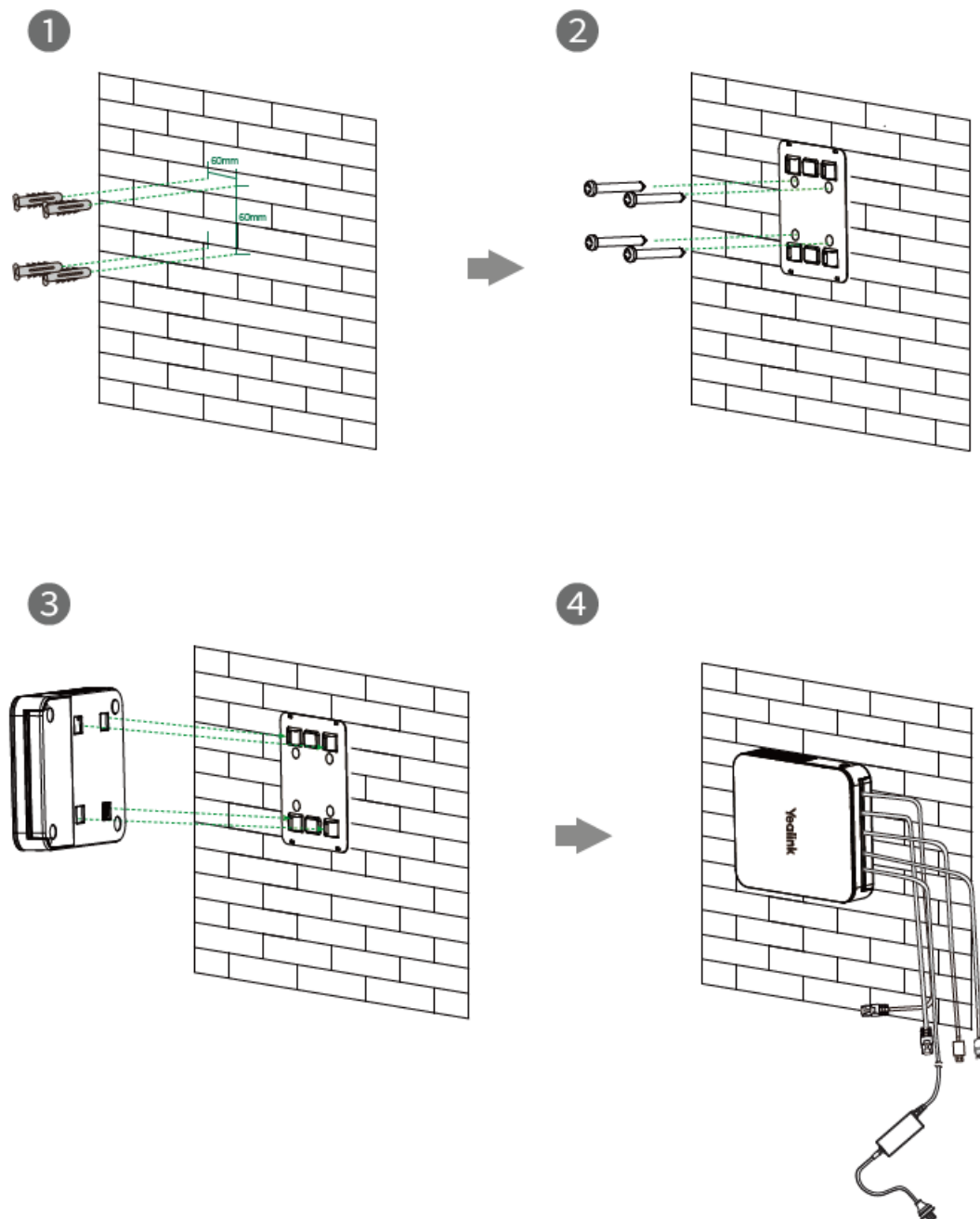
#### NOTE

When starting up the MCore Pro for the first time, connect a mouse to complete the initial configuration. We recommend using a wireless mouse and keyboard kit.

MCore Pro has an integrated cable lock feature, and no additional cable lock box is needed to secure the cables. When working with Microsoft Teams Rooms, we recommend setting the output resolution of MCore Pro to 1080P. If it cannot be configured normally, please purchase an EDID emulator.

## Install MCore Pro





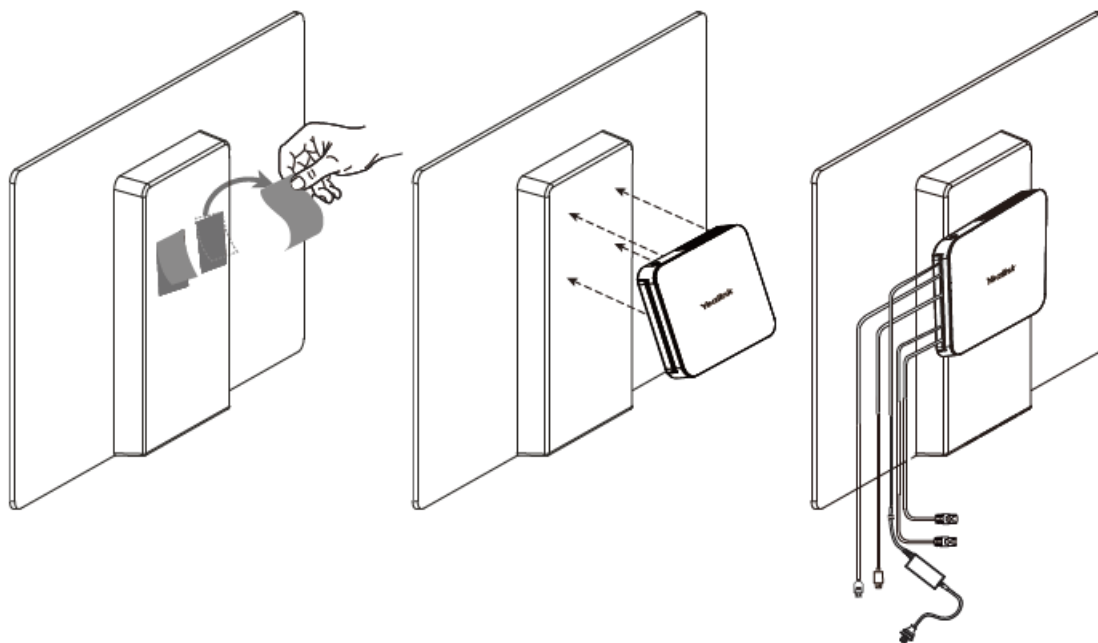
**NOTE**

Before mounting the bracket, confirm the direction of the MCore Pro installation. Once the bracket is mounted, the installation direction cannot be changed.

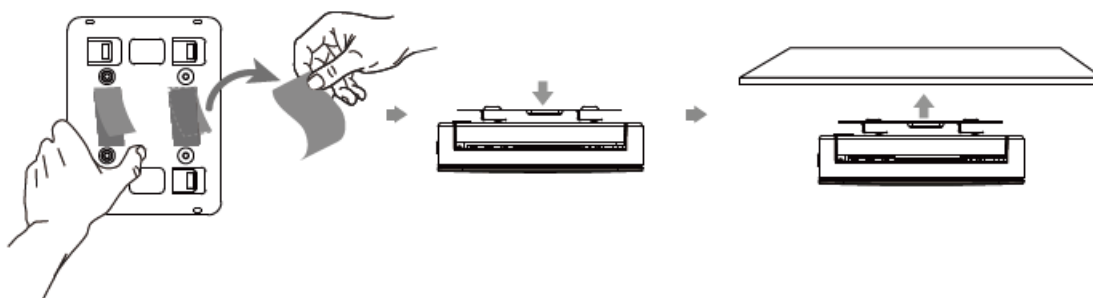
**Installation Methods**



- **Mount on the TV**



- **Stick to the Table**



**NOTE**

You can stick the MCore Pro on the top, sides, or bottom of the table.